

Paper Reference(s) 1BI0/2F
Pearson Edexcel Level 1/Level 2 GCSE (9–1)

Biology
PAPER 2
Foundation Tier

Friday 9 June 2023 – Afternoon

Diagram Booklet

In the boxes below, write your name, centre number and candidate number.

Surname					
Other names					
Centre Number					
Candidate Number					

INSTRUCTIONS

There may be spare copies of some diagrams in case you need them.

THIS DIAGRAM BOOKLET MUST BE RETURNED WITH THE QUESTION PAPER AT THE END OF THE EXAMINATION.

Contents

Page

5	Question 1(a)
6	Question 1(a)(iii)
7	Question 1(b)
8	Question 2(b)
9	Question 3(a)
10	Question 3(b)
11	Question 3(c)
12	Question 4(a)
13	Question 4(b)
14	Question 5(a)
15	Question 5(b)(i)
16	Question 5(b)(ii)
17	Question 6(b)
18	Question 7(a)
19	Question 7(a)(i)
20	Question 7(c)
21	Question 8(a)
22	Question 9(c)
23	Question 10(a)
24	Question 10(b)

(continued on the next page)

Contents continued.

Spare Copies

25 Question 1(a)(iii)

26 Question 4(a)

27 Question 6(b)

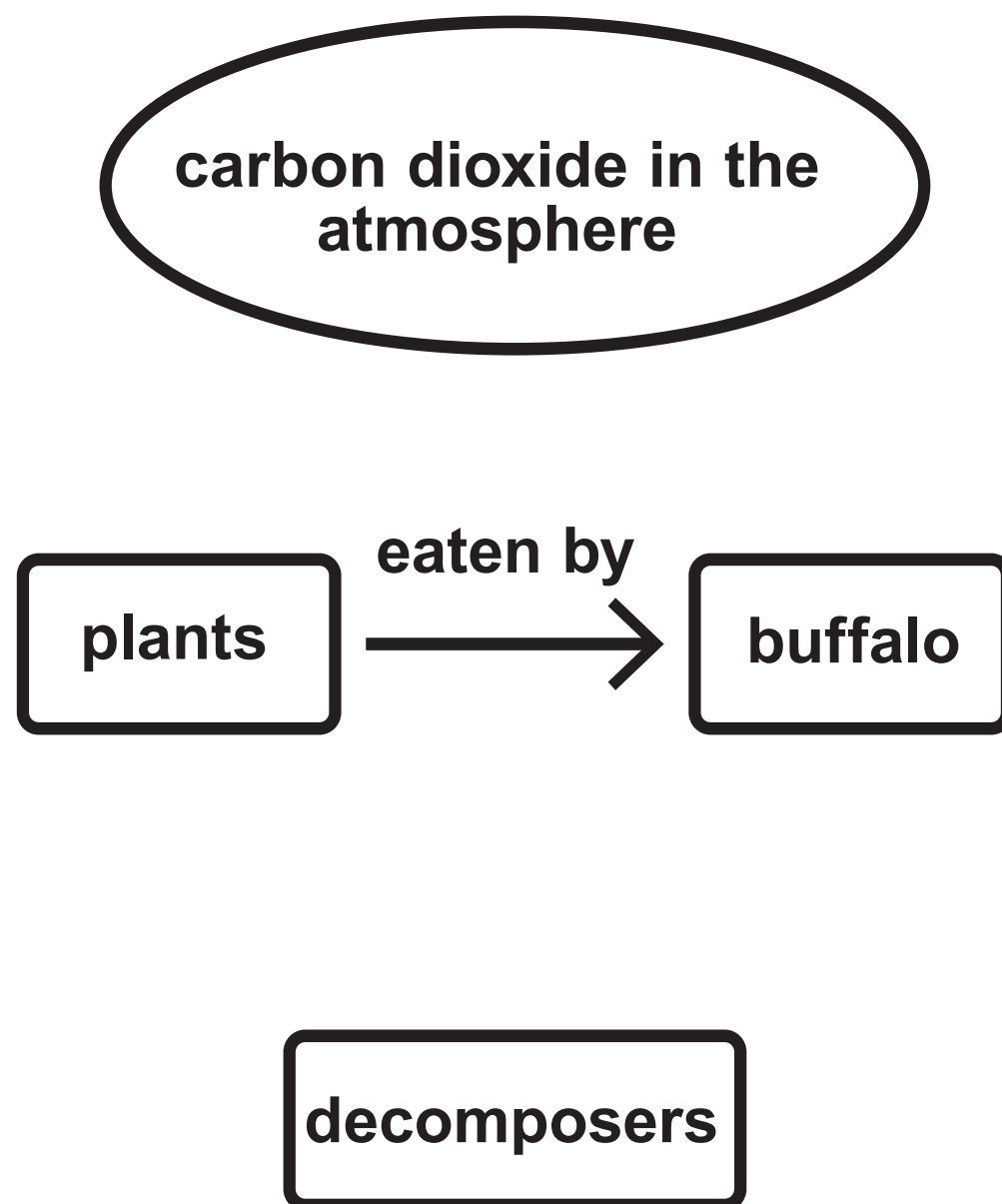
FIGURE 1

The black and white photograph shows an egret stood on the back of a buffalo in a river.



Question 1(a)(iii)

FIGURE 2



Question 1(b)

FIGURE 3

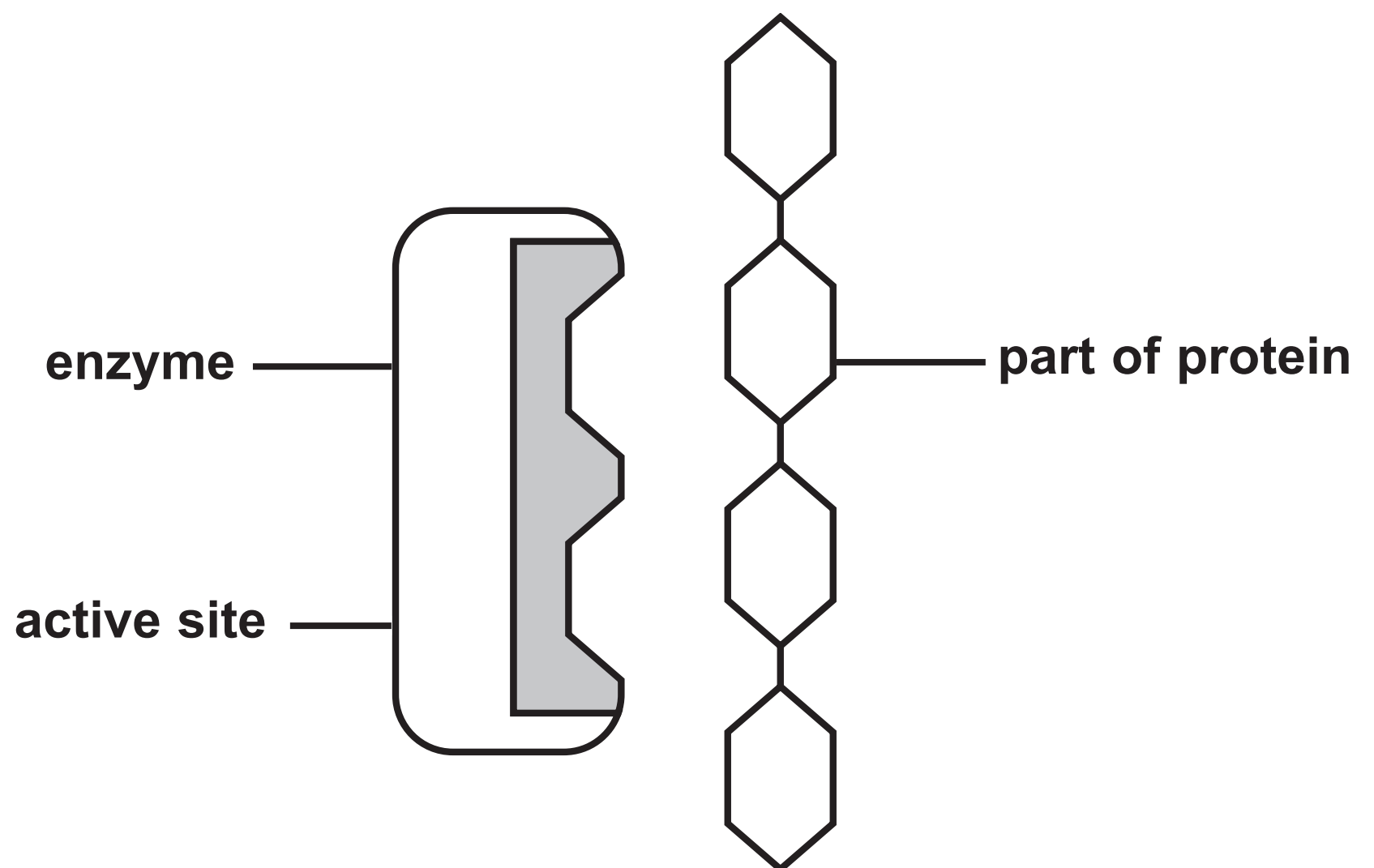
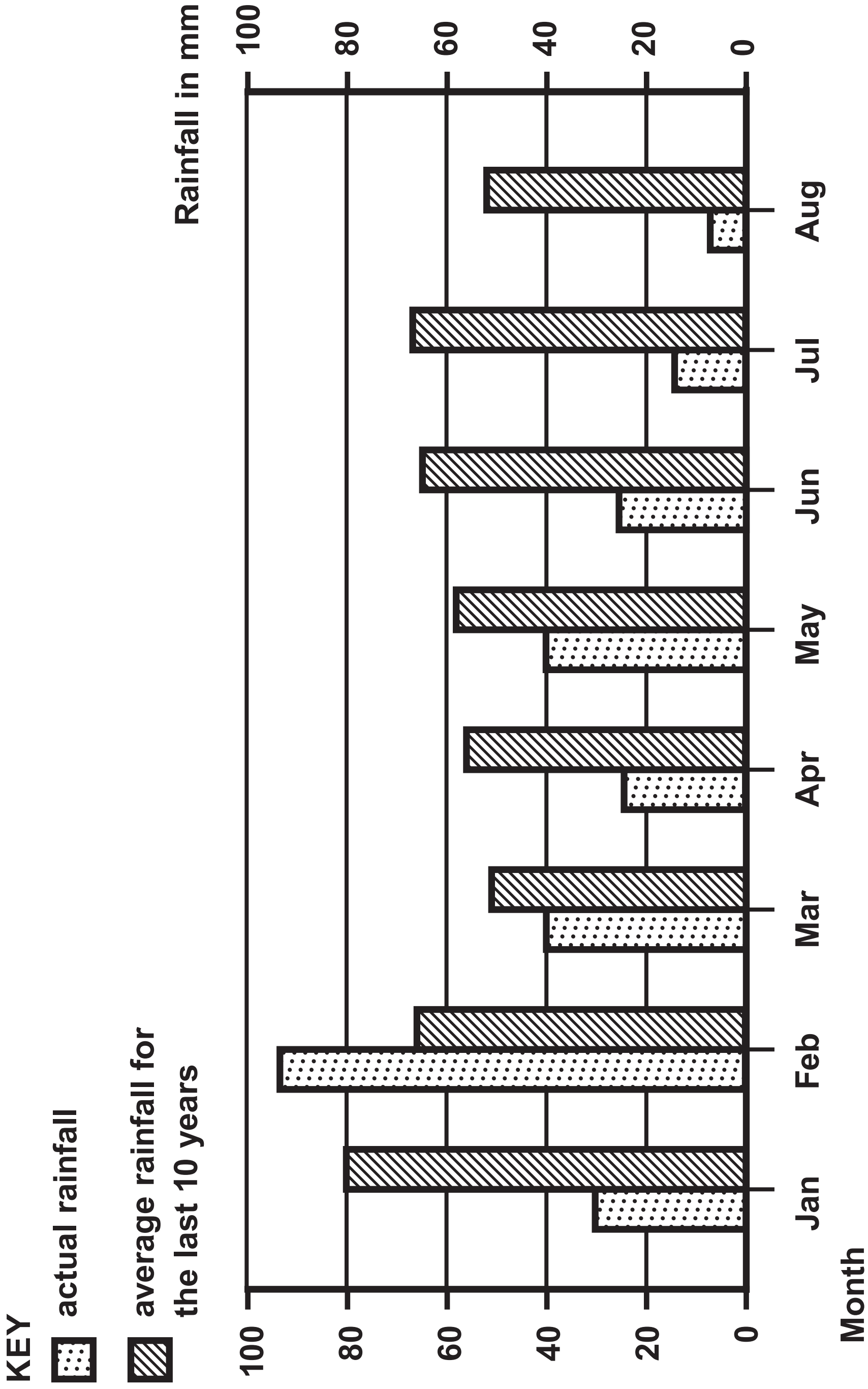


FIGURE 4



Question 3(a)

FIGURE 5

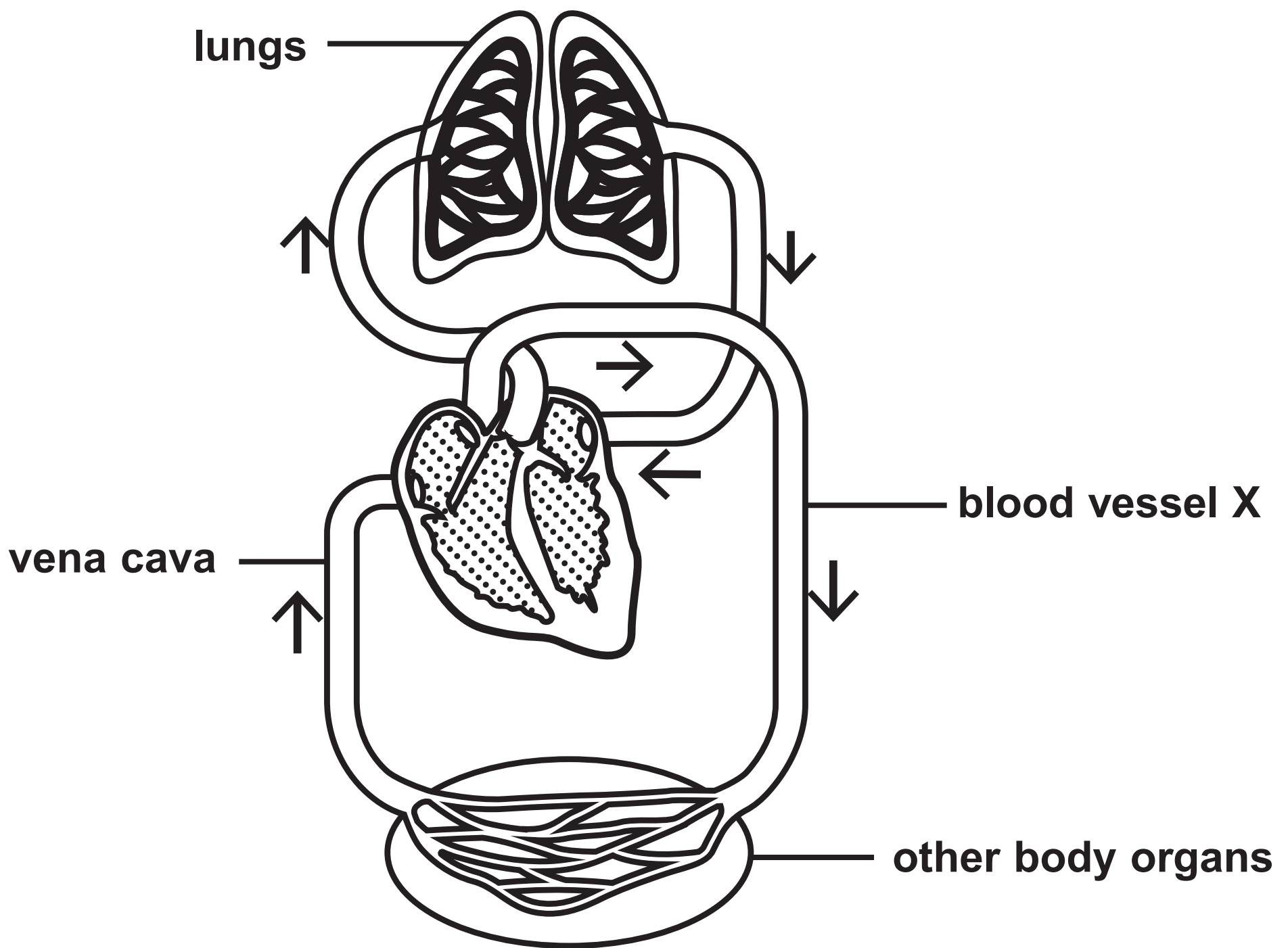
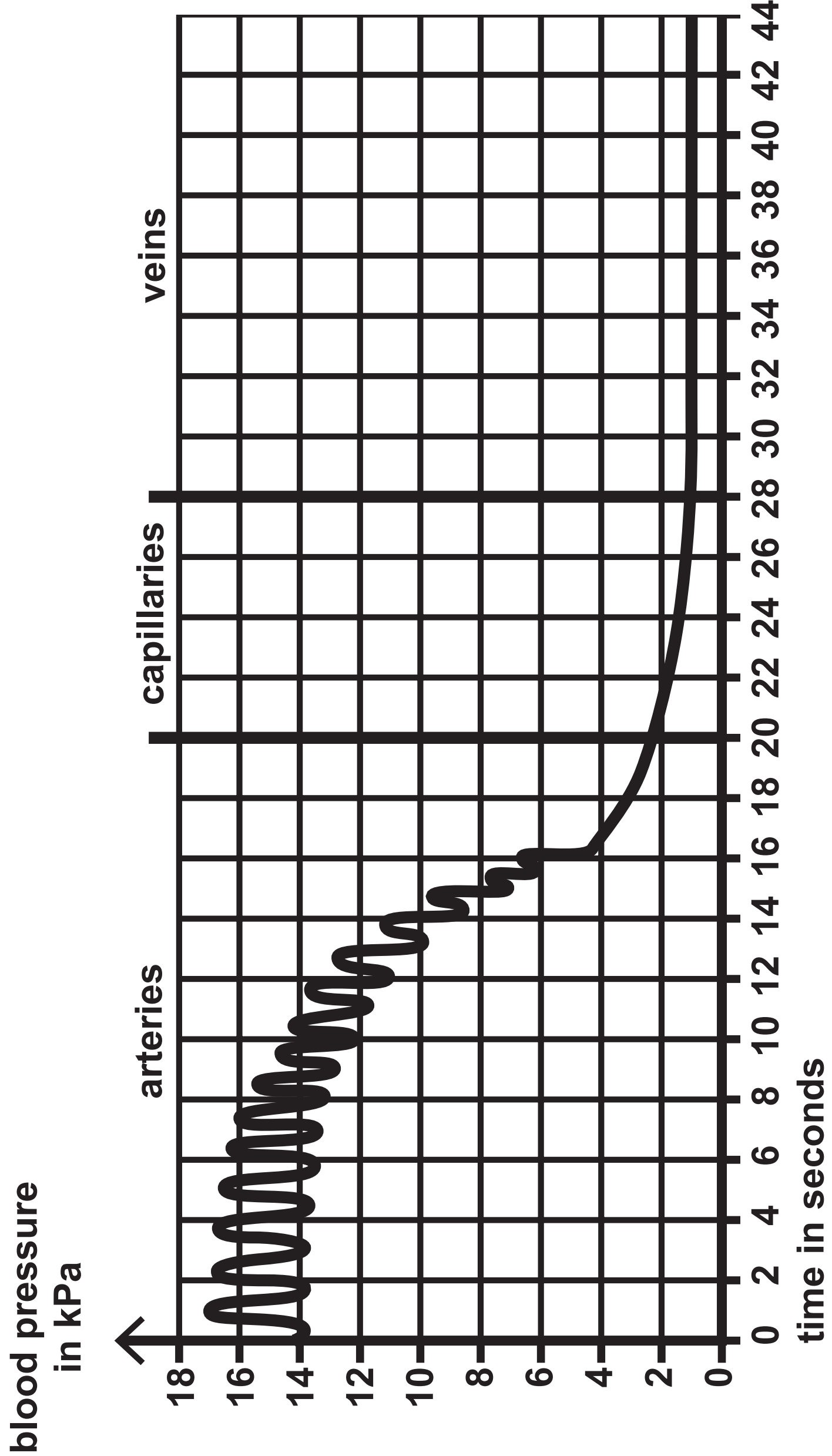


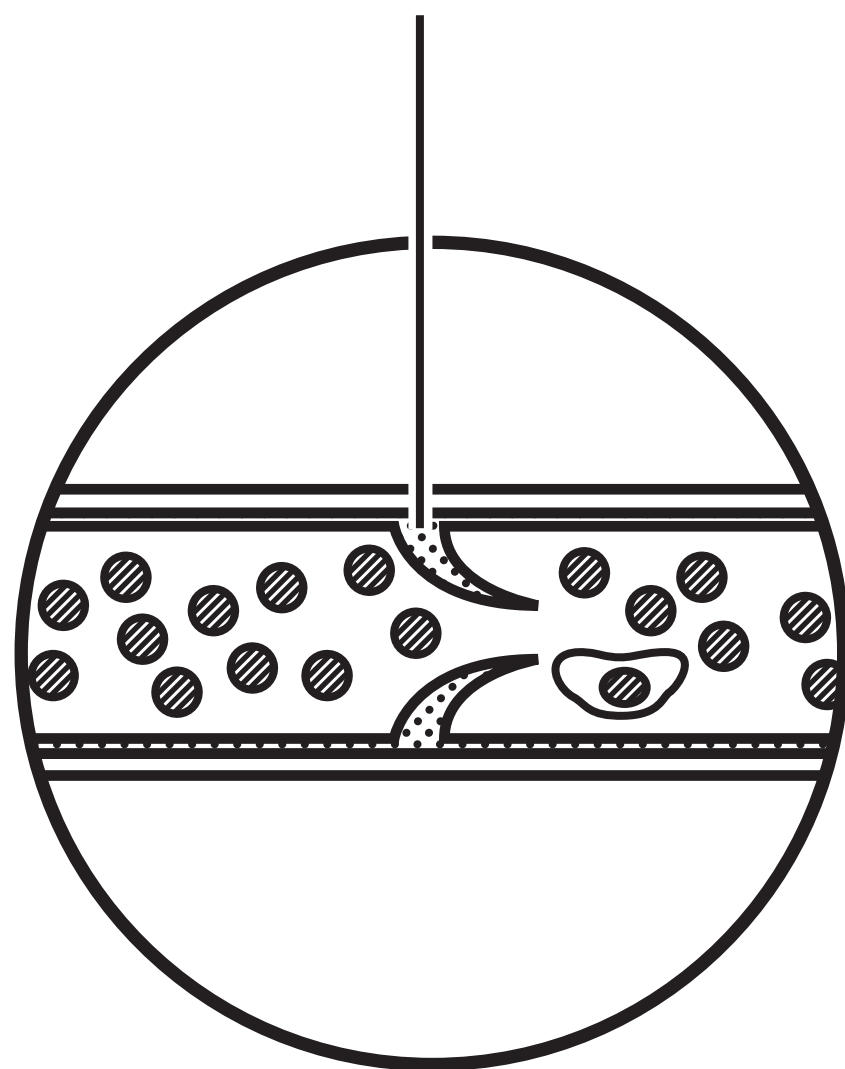
FIGURE 6



Question 3(c)

FIGURE 7

structure Q



Question 4(a)

hormone

thyroxine

adrenalin

endocrine gland

thyroid gland

pituitary gland

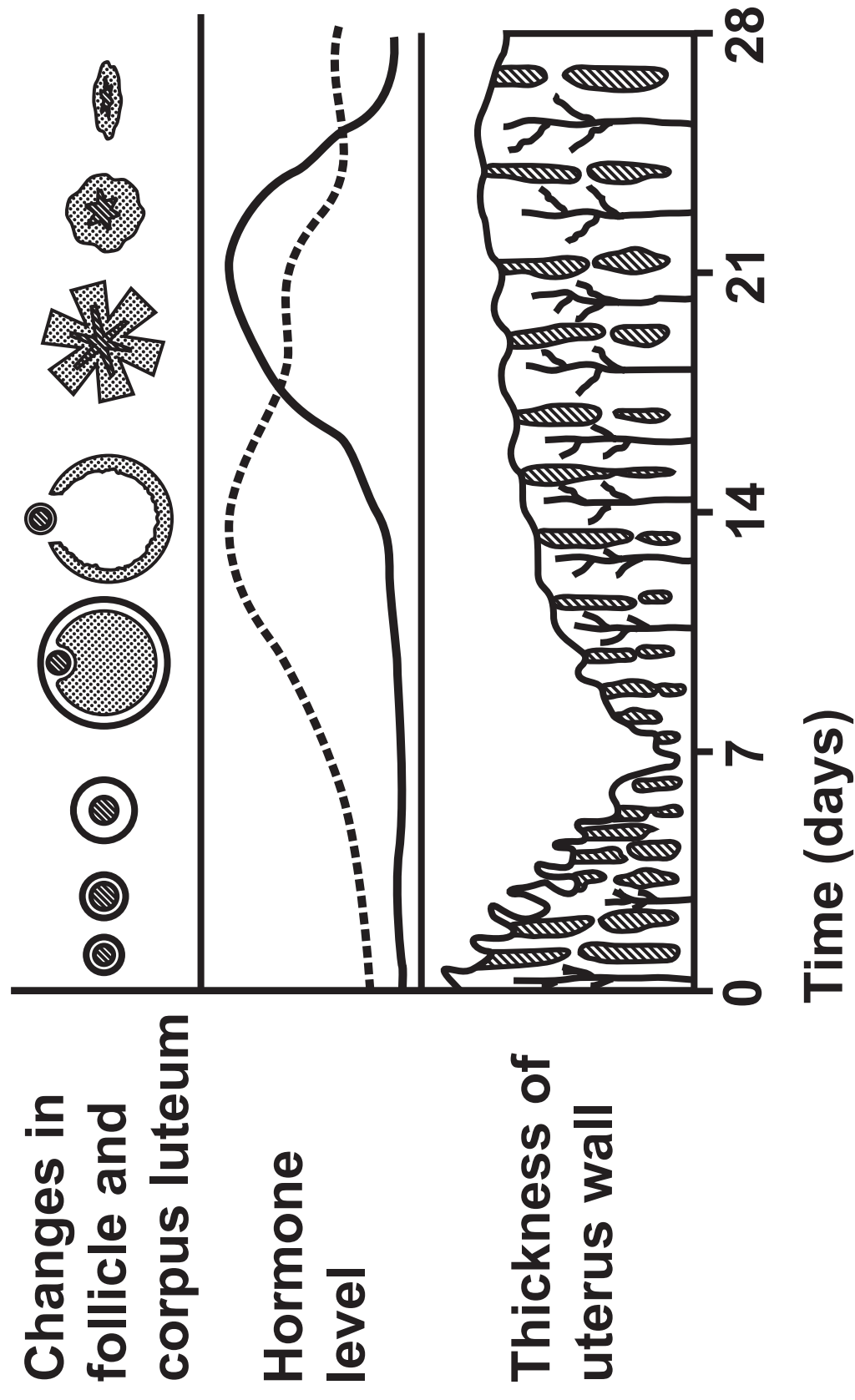
pancreas

adrenal glands

ovaries

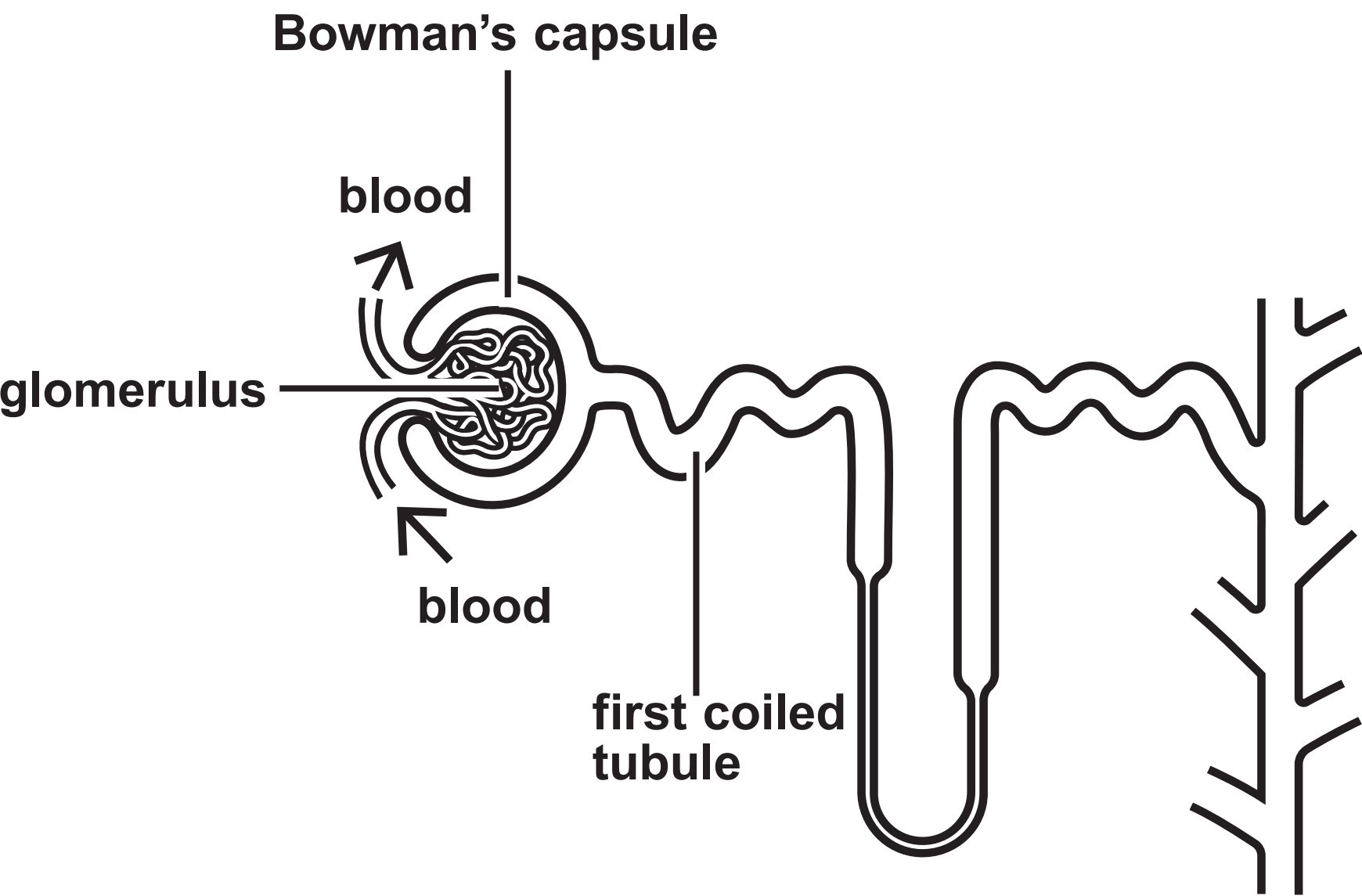
KEY
 oestrogen
 ————— progesterone

FIGURE 8



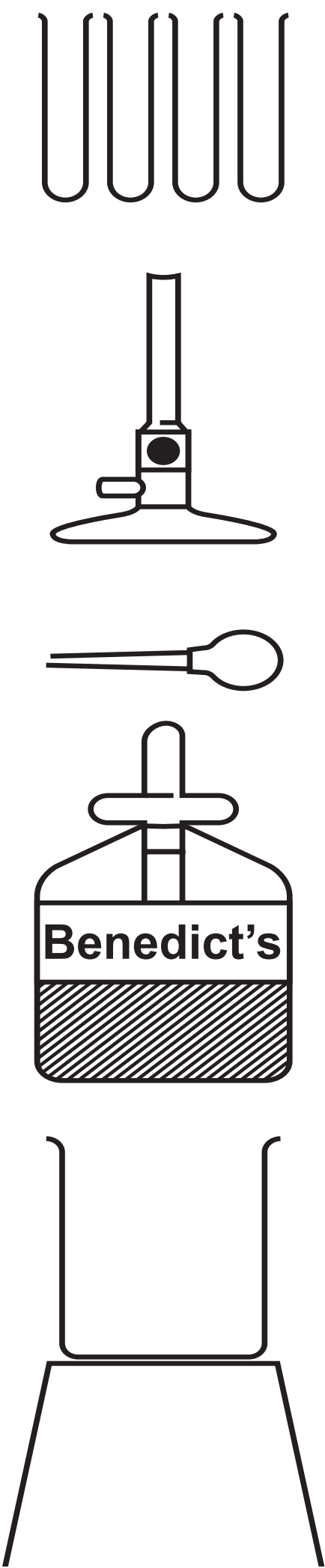
Question 5(a)

FIGURE 9



Question 5(b)(i)

FIGURE 10

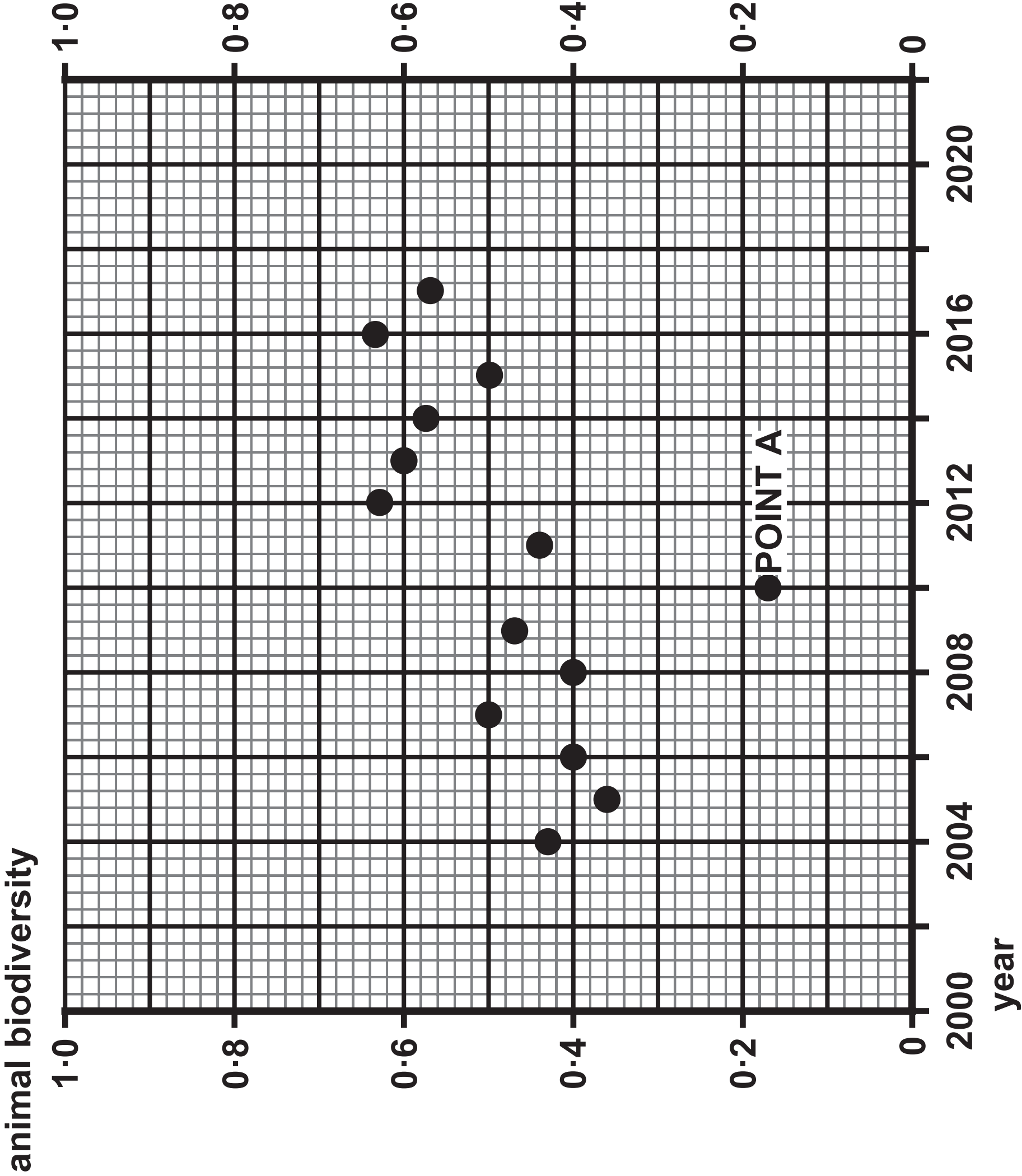


Question 5(b)(ii)

FIGURE 11

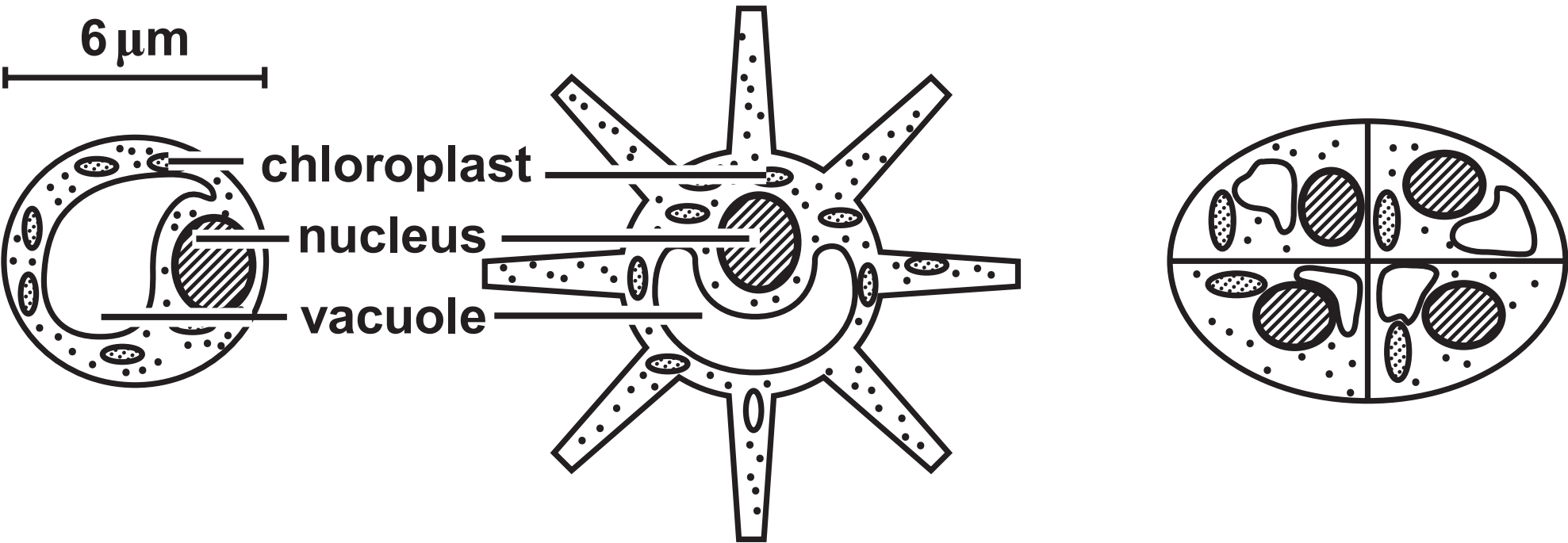
	part of nephron		
	Bowman's capsule	start of first coiled tubule	end of first coiled tubule
concentration of glucose in millimoles per dm ³	8	8	0

FIGURE 12



Question 7(a)

FIGURE 13



Question 7(a)(i)

		concentration of oxygen in species A in parts per million	concentration of oxygen in pond water in parts per million
<input type="checkbox"/>	A	10	10
<input type="checkbox"/>	B	12	10
<input type="checkbox"/>	C	10	12
<input type="checkbox"/>	D	12	12

FIGURE 14

The black and white photograph shows large, round leaves on a branch that are holding raindrops from recent rainfall. Each leaf has a defined, upturned 'V'-shaped structure along the surface, evenly spaced apart.

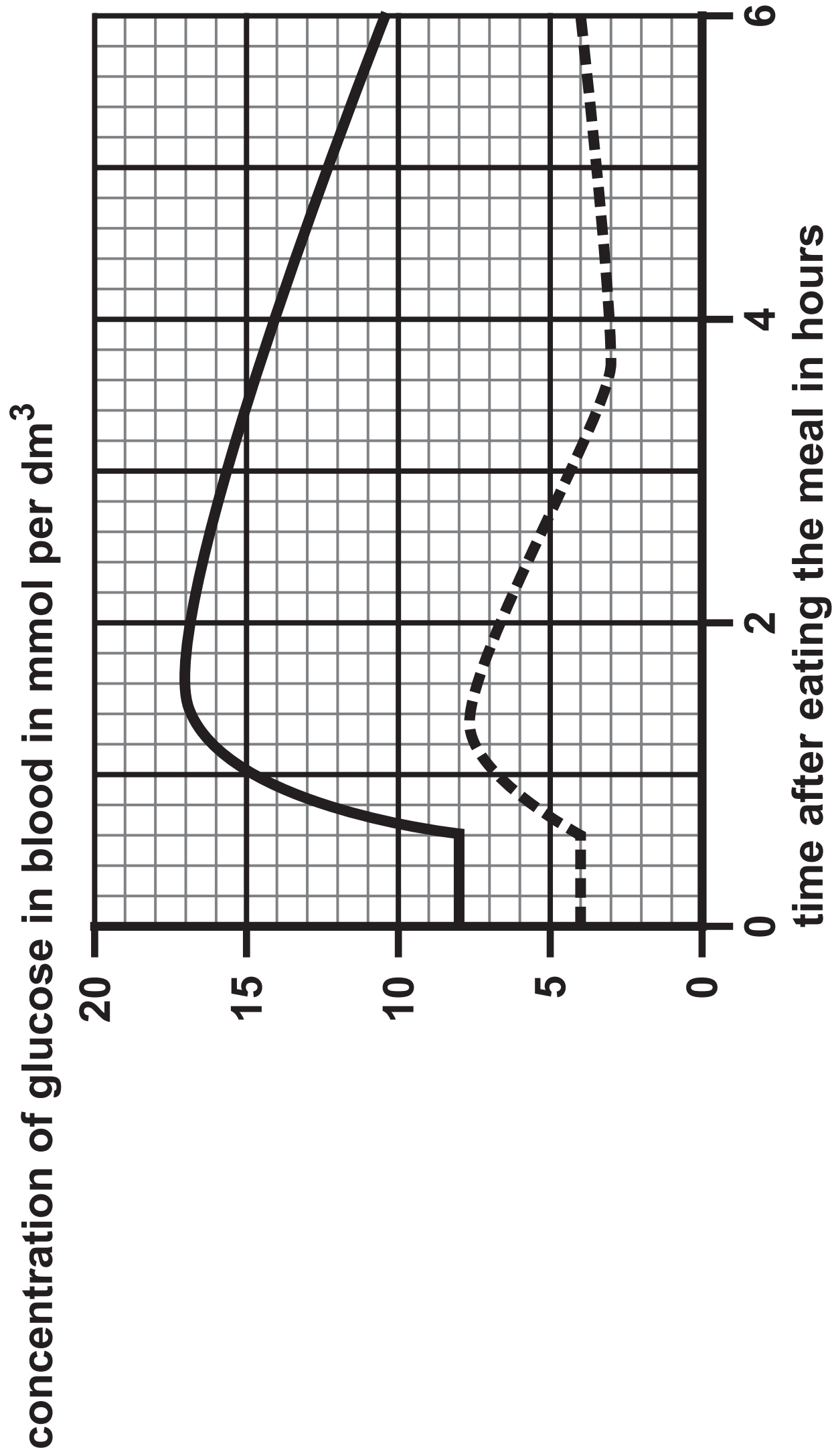


FIGURE 15

KEY

— person with diabetes

- - - person who does not have diabetes



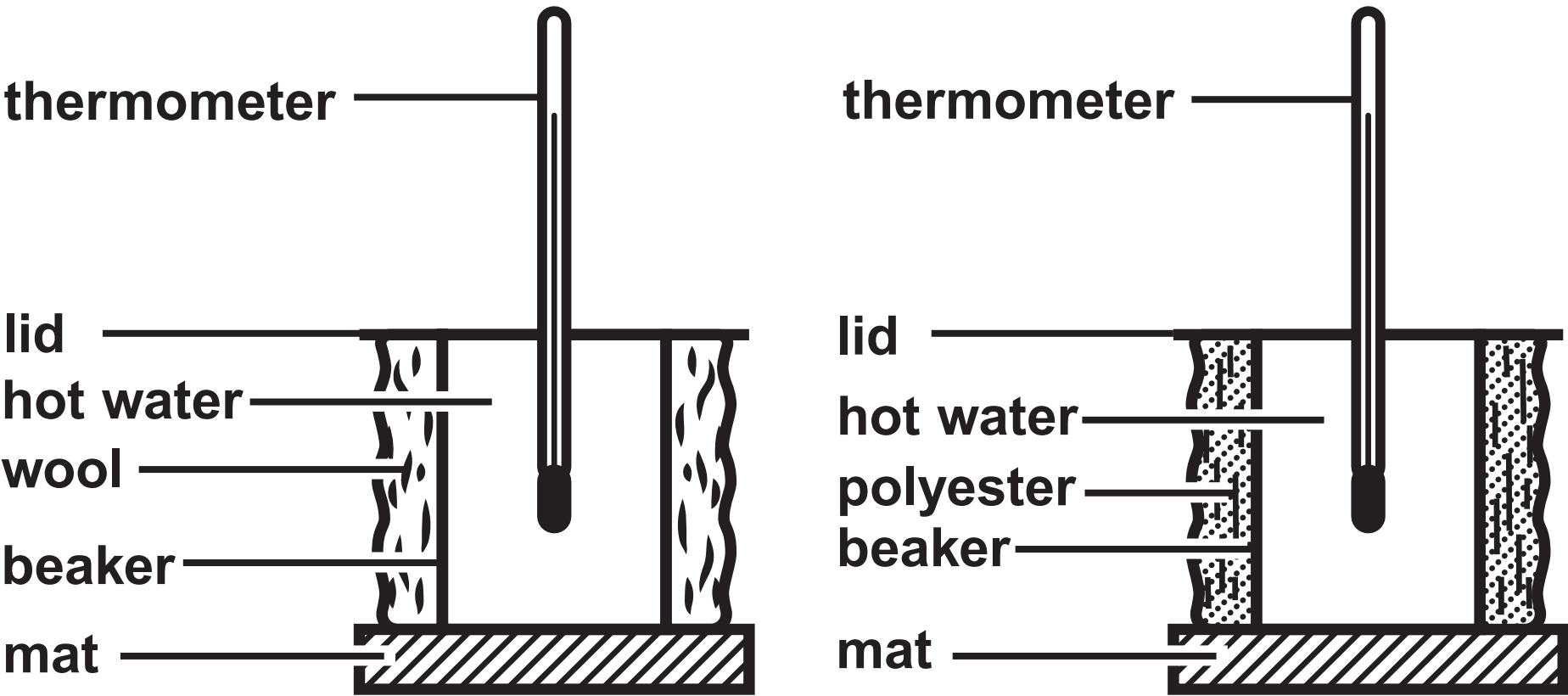
Question 9(c)

FIGURE 16

pH	4	5	6	7 (neutral)	8
colour	yellow	yellowy green	light green	green	blue

Question 10(a)

FIGURE 17



Question 10(b)

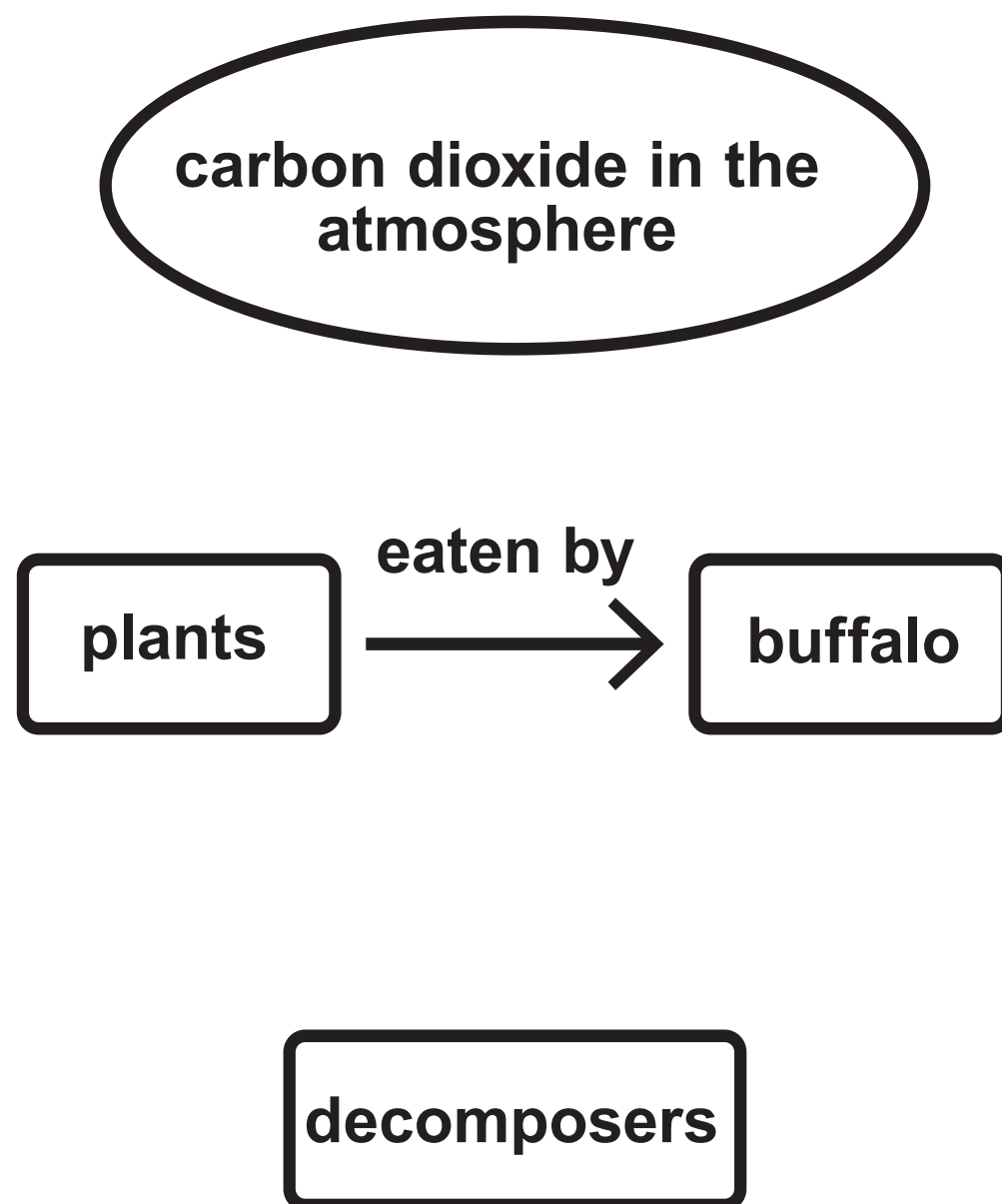
FIGURE 18

wool	
time in minutes	temperature in °C
0	64
2	61
4	56
6	53
8	49
10	45
12	42

polyester	
time in minutes	temperature in °C
0	82
2	74
4	68
6	63
8	59
10	53
12	48

Question 1(a)(iii)

FIGURE 2



Question 4(a)

hormone

thyroxine

adrenalin

endocrine gland

thyroid gland

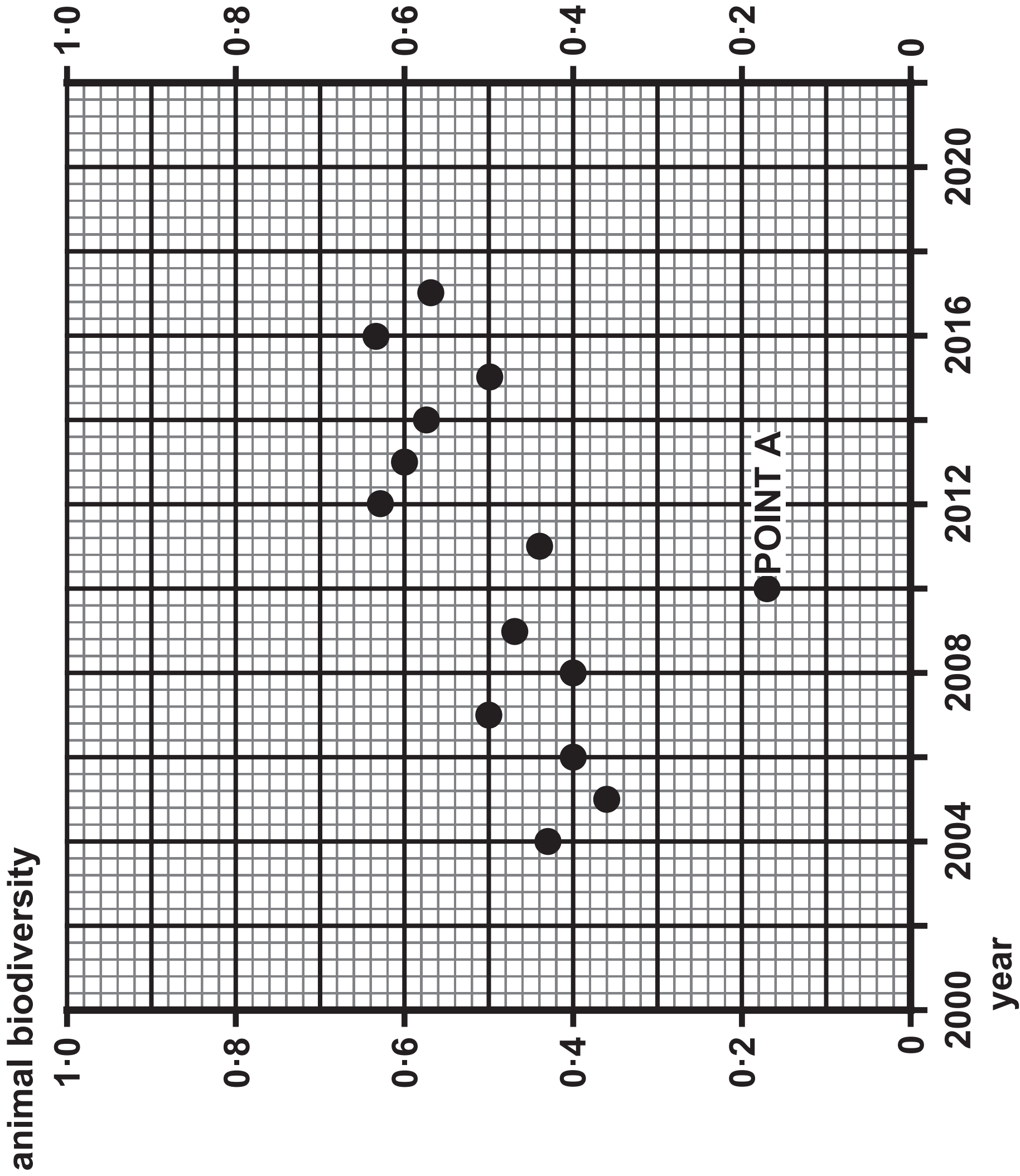
pituitary gland

pancreas

adrenal glands

ovaries

FIGURE 12



Acknowledgments

Question 1

(source: © Jaromir Chalabala/Shutterstock)

Question 7(c)

(source: © Butus/Shutterstock)